

SOCIAL RESPONSIBILITY

BELONGING FOR ALL



FOR YOUTH DEVELOPMENT®
FOR HEALTHY LIVING
FOR SOCIAL RESPONSIBILITY



Some of our neighbors live in the gray area between poverty and financial security, which affects their wellness, risk of chronic disease and makes them susceptible to the growing epidemic of social isolation. The challenges can be even greater for newcomers.

Our Y is committed to serving all people from all backgrounds, regardless of their ability to pay. Generous donations help ensure equal access by providing financial assistance for membership and programs, and by supporting outreach in a safe, welcoming space for all in our community.

Membership and
Program Scholarships

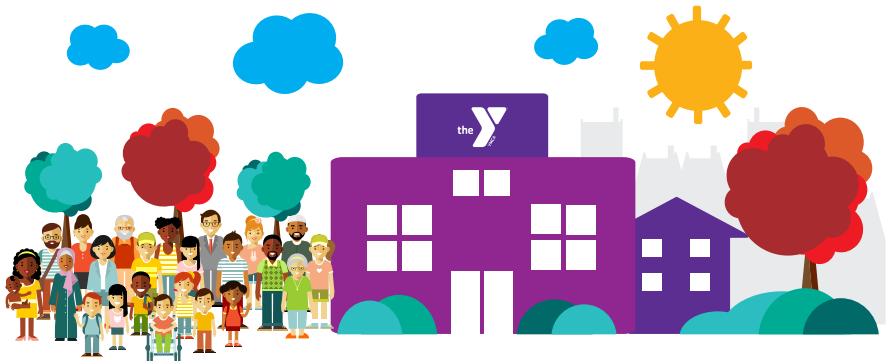
Reducing Social Isolation

Community Outreach

New American
Welcome Center

YMCA OF GREATER KANSAS CITY'S VISION

To ensure that everyone in the community has access to programs and opportunities to increase their well-being and the well-being of their families.



BELONGING FOR ALL



1 in 10 people in the metro lives in poverty



1 in 5 Americans always or often feels lonely or socially isolated, putting their health at risk



7% of people in the metro are immigrants

THE NEED:

\$3,900,000 over three years

to provide financial assistance to more than 22,000 people in need each year and give them access to life-strengthening programs and services.



For a better us.®